



# SITE AMENITIES

FROM KING LUMINAIRE



## KING DECORATIVE GUARD- KGD 20



King Luminaire will accept no compromise regarding the quality of our products. The same dedication that has gone into manufacturing King's light fixtures and poles has been applied to our new line of site amenities. Insistence on uncompromising quality, outstanding durability, and painstaking attention to detail has resulted in an unrivaled line of decorative site amenities that are the ideal choice for any application.

Constructed of a 1/4 inch thick aluminum flat-bar, the King Tree Guard is made with a practical split ring design. Tamperproof screws in four locations are used to secure both of these halves together. The King Tree Guard is anchor-bolt mounted, but locator rings are also supplied for additional reinforcement.



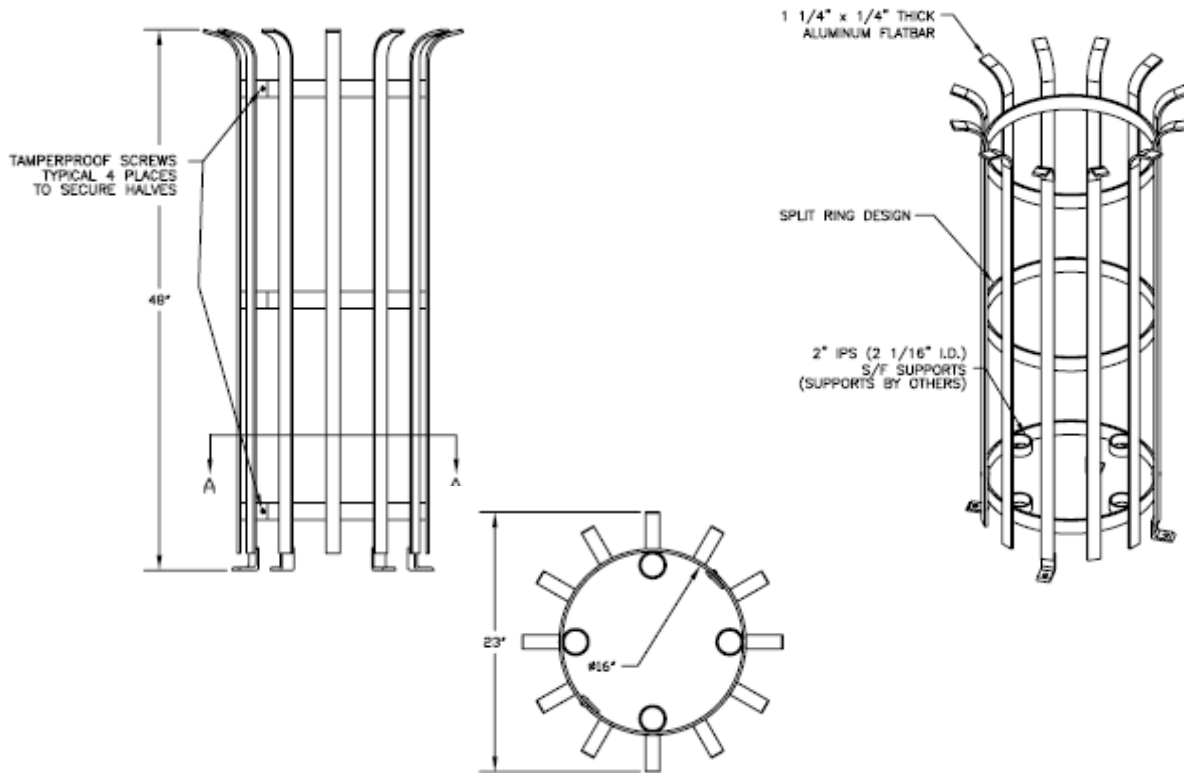
The decorative design of the KGD20 Tree Guard not only enhances the look of outdoor landscapes, but has many practical applications that can extend the life of trees by protecting them from natural and human risks. Such risks include animals chewing off bark, sun damage, and careless use of landscaping equipment. Used alone or paired with the KTG20 tree grate, the KGD20 tree guard will add strength and style to any setting.



STANDARD PAINTS: POLYURETHANE, POLYESTER, POLYESTER, POLYESTER, POLYESTER

Standard, premium and custom paint colors available. Please contact us for details

# KING DECORATIVE GUARD - KGD20



## How to catalog

	<b>Series*</b>		<b>Material</b>		<b>Color</b>
	20		M - Aluminum S - Steel		BK - Black BE - Blue AL - Aluminum Finish BZ - Bronze
KGD	20	BP	M	BE	
<b>King Guard</b>		<b>Mounting Configuration</b>			
<b>Decorative</b>		BP- Base Plated			

\*please visit our website or see our catalog for other site amenity options



King Luminaire • StressCrete

**STRESSCRETE GROUP**

9200 Energy Lane  
Northport Alabama 35476-3442  
(205)-339-0711  
1-800-435-6563  
Fax: (205) 339-4840

14503 Wallick Road  
Atchison, Kansas 66002  
(913)-255-3112  
1-800-837-1024  
Fax: (913) 255-3124

1153 State Route 46 North  
P.O. Box 266  
Jefferson, Ohio 44047  
1-800-268-7809  
Fax: (913) 255-3124

840 Walkers Line  
P.O. Box 7  
Burlington, Ontario L7R3X9  
(905)-632-9301  
1-800-268-7809  
Fax: (905) 632-8116